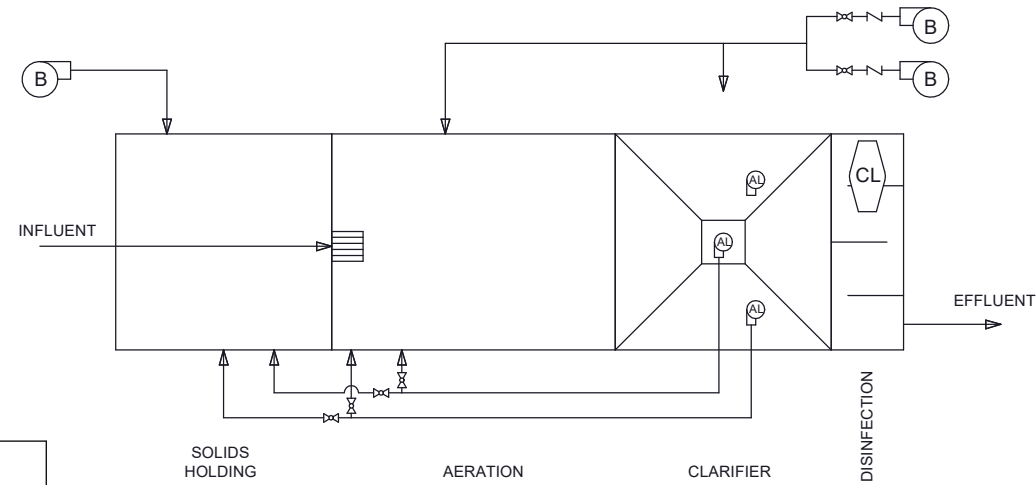


- GENERAL ARRANGEMENT NOTES
1. THE DRAWINGS DEPICTED HEREIN REPRESENT PRELIMINARY LAYOUT(S) OF A WASTEWATER TREATMENT SYSTEM CAPABLE OF TREATING THE DOMESTIC WASTE CONSTITUENTS NOTED IN TABLE 1.
  2. THE EQUIPMENT ARRANGEMENT/LAYOUT IS SCHEMATIC IN NATURE AND SOME OBJECTS MAY NOT BE DRAWN TO SCALE. REFER TO THE ENGINEER-OF-RECORD PROJECT DOCUMENTS FOR FINAL SITE AND/OR EQUIPMENT ARRANGEMENT.
  3. PACKAGE TREATMENT SYSTEM TANK BASINS SHALL BE FABRICATED FROM STRUCTURAL GRADE STEEL PLATE PER ASTM A36 REQUIREMENTS. STRUCTURAL SHAPES SHALL BE PER AISC PREFERRED MATERIAL SPECIFICATION.
  4. BLOWERS, WEIRS, CONTROL PANELS, AND VARIOUS SMALL PARTS SHALL BE SHIPPED UNASSEMBLED AND SECURELY PACKAGED, TO BE INSTALLED BY CONTRACTOR. REFER TO MANUFACTURER'S INSTALLATION INSTRUCTIONS FOR ADDITIONAL DETAIL.
  5. CONTRACTOR TO PROVIDE AND INSTALL ALL FIELD PIPING AND SECURE ALL EQUIPMENT CONNECTIONS AS SHOWN IN THE ENGINEER OF RECORD'S PROJECT DOCUMENTS.
  6. INTERNAL DEVICES SHALL BE INSTALLED PLUMB AND LEVEL.
  7. CONTACT AN INFILTRATOR/DELTA REPRESENTATIVE REGARDING DEVIATIONS FROM THESE STANDARDS.



**TABLE 1  
PROCESS PARAMETERS**

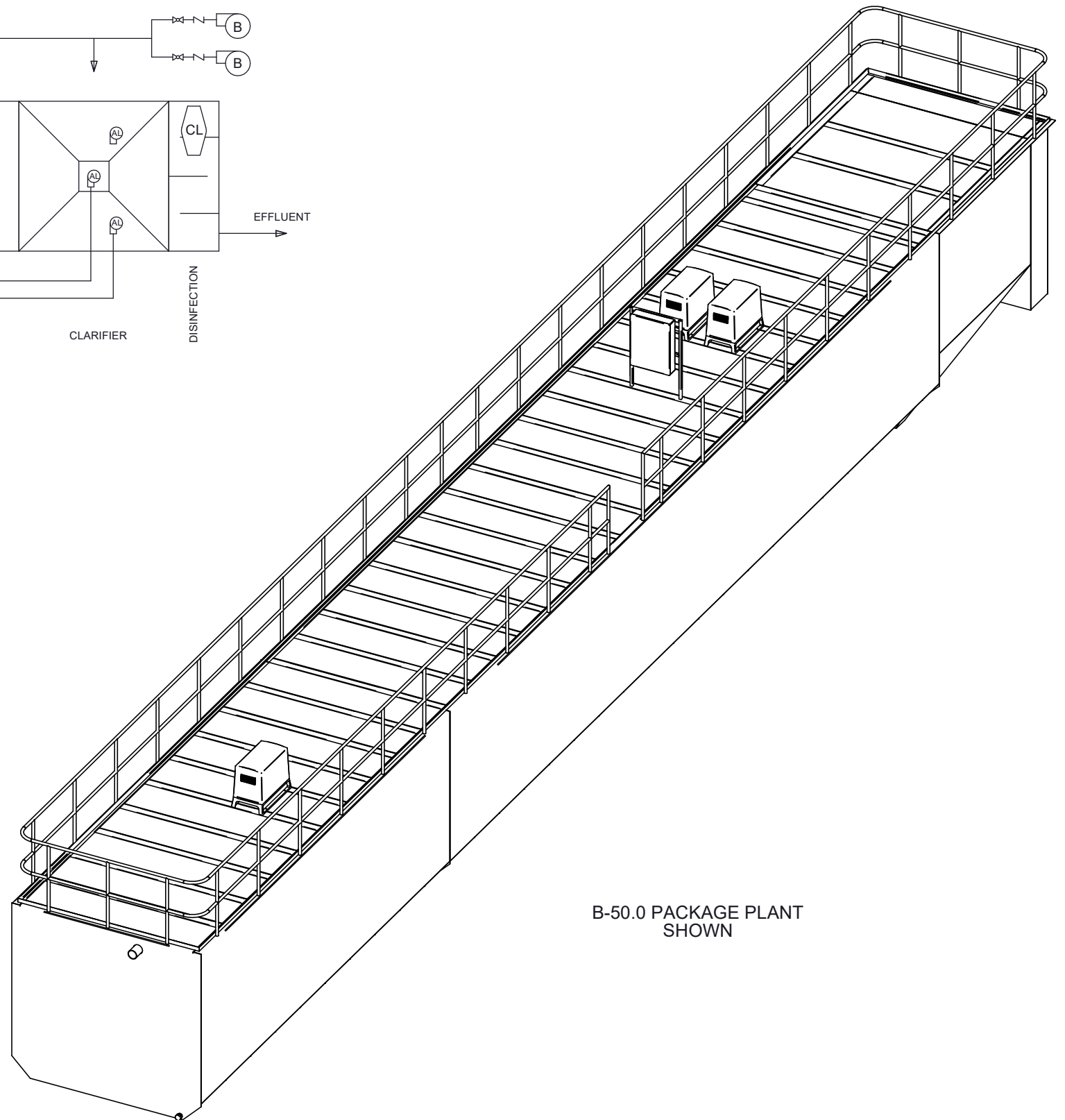
MODEL	AVG. DAILY FLOW		PEAK DAILY FLOW (PDF)	PEAK HOURLY FLOW (PHF)	INFLUENT BOD	AIR TEMP.	WATER TEMP.		RELATIVE HUMIDITY		SITE ELEV.
	MIN	MAX	MAX	MAX	MAX	MAX	MIN	MAX	MIN	MAX	MAX
B-27.5	13,750 (GPD)	41,250 (GPD)	55,000 (GPD)	110,000 (GPD)	45.9 (LB/D)	115°F	68°F	90°F	10%	90%	1,000 FT
B-30.0	15,000 (GPD)	45,000 (GPD)	60,000 (GPD)	120,000 (GPD)	50 (LB/D)	115°F	68°F	90°F	10%	90%	1,000 FT
B-35.0	17,500 (GPD)	52,500 (GPD)	70,000 (GPD)	140,000 (GPD)	58.4 (LB/D)	115°F	68°F	90°F	10%	90%	1,000 FT
B-40.0	20,000 (GPD)	60,000 (GPD)	80,000 (GPD)	160,000 (GPD)	66.7 (LB/D)	115°F	68°F	90°F	10%	90%	1,000 FT
B-45.0	22,500 (GPD)	67,500 (GPD)	90,000 (GPD)	180,000 (GPD)	75.1 (LB/D)	115°F	68°F	90°F	10%	90%	1,000 FT
B-50.0	25,000 (GPD)	75,000 (GPD)	100,000 (GPD)	200,000 (GPD)	83.4 (LB/D)	115°F	68°F	90°F	10%	90%	1,000 FT

**TABLE 2  
AIR DEMAND**

PARAMETER	B-27.5	B-30.0	B-35.0	B-40.0	B-45.0	B-50.0
STANDARD AIRFLOW	202 SCFM	218 SCFM	249 SCFM	280 SCFM	311 SCFM	342 SCFM
SITE AIR REQ.	228 ICFM	245 ICFM	280 ICFM	315 ICFM	350 ICFM	385 ICFM
BLOWER INLET AIR	228 ICFM	245 ICFM	280 ICFM	315 ICFM	350 ICFM	385 ICFM
AIR HEADER SIZE	2.5"	2.5"	2.5"	4"	4"	4"
BLOWER SELECTION	G-D	G-D	G-D	G-D	G-D	G-D
BLOWER MODEL	4M	4M	4M	5M	5M	5M
NOISE LEVEL	83 dB(A)	84 dB(A)	86 dB(A)	84 dB(A)	85 dB(A)	86 dB(A)
AIR TEMP. RISE	73°F	72°F	70°F	72°F	70°F	69°F
BLOWER INLET DIAMETER	2.5" NPT	2.5" NPT	2.5" NPT	4" NPT	4" NPT	4" NPT
BLOWER OUTLET DIAMETER	2.5" NPT	2.5" NPT	2.5" NPT	4" NPT	4" NPT	4" NPT
MOTOR SELECTION	7.5 HP	10 HP	10 HP	10 HP	15 HP	15 HP
OPERATING POWER	5.4 kW	5.7 kW	6.3 kW	7.3 kW	8 kW	8.7 kW
STARTING CURRENT	198 A @ 230 V 1-PH 60HZ 124/62 A @ 230/460 V 3-PH 60HZ	260 A @ 230 V 1-PH 60HZ 158/79 A @ 230/460 3-PH 60HZ		335 A @ 230 1-PH 60HZ 226/133 A @ 230/460 3-PH 60HZ		
FULL LOAD CURRENT	30.0 A @ 230 V 1-PH 60HZ 19.0/9.5 A @ 230/460 V 3-PH 60HZ	41.5 A @ 230 V 1-PH 60HZ 25.0/12.5 A @ 230/460 3-PH 60HZ		58 A @ 230 1-PH 60HZ		37.5/18.8 A @ 230/460 3-PH 60HZ

**TABLE 3  
STANDARD EQUIPMENT LIST**

MODEL	MAIN AIR BLOWER			AERATION DIFFUSERS			SOLIDS MIXING BLOWER			SOLIDS MIXING DIFFUSERS			CHLORINE TABLET FEEDER			CONTROL PANEL		
	QTY.	MAKE	MODEL	QTY.	MAKE	MODEL	QTY.	MAKE	MODEL	QTY.	MAKE	MODEL	QTY.	MAKE	MODEL	QTY.	MAKE	MODEL
B-27.5	2	G-D	4M	44	DIFFUSED GAS TECHNOLOGIES	DP-75	1	G-D	2L	12	DIFFUSED GAS TECHNOLOGIES	DP-75	1	NORWECO	IT4000	1	DELTA	PER DESIGN
B-30.0	2	G-D	4M	44	DIFFUSED GAS TECHNOLOGIES	DP-75	1	G-D	2L	12	DIFFUSED GAS TECHNOLOGIES	DP-75	1	NORWECO	IT4000	1	DELTA	PER DESIGN
B-35.0	2	G-D	4M	52	DIFFUSED GAS TECHNOLOGIES	DP-75	1	G-D	3M	12	DIFFUSED GAS TECHNOLOGIES	DP-75	1	NORWECO	IT4000	1	DELTA	PER DESIGN
B-40.0	2	G-D	5M	60	DIFFUSED GAS TECHNOLOGIES	DP-75	1	G-D	3M	16	DIFFUSED GAS TECHNOLOGIES	DP-75	1	NORWECO	IT4000	1	DELTA	PER DESIGN
B-45.0	2	G-D	5M	68	DIFFUSED GAS TECHNOLOGIES	DP-75	1	G-D	3M	16	DIFFUSED GAS TECHNOLOGIES	DP-75	1	NORWECO	IT4000	1	DELTA	PER DESIGN
B-50.0	2	G-D	5M	76	DIFFUSED GAS TECHNOLOGIES	DP-75	1	G-D	3M	20	DIFFUSED GAS TECHNOLOGIES	DP-75	1	NORWECO	IT4000	1	DELTA	PER DESIGN



NO.	DATE	INITIALS	DESCRIPTION

**INFILTRATOR WATER TECHNOLOGIES, LLC**  
 4 BUSINESS PARK RD. OLD SAYBROOK, CT 06475  
 WWW.INFILTRATORWATER.COM  
 PHONE: (800) 221-4436 / EMAIL: INFO@INFILTRATORWATER.COM

COPYRIGHT (C) 2024 INFILTRATOR WATER TECHNOLOGIES, LLC (DTS). INFORMATION CONTAINED HEREIN IS CONFIDENTIAL AND IS THE PROPERTY OF DTS. NO PART OF THIS DRAWING SHALL BE REPRODUCED, DISTRIBUTED, DISCLOSED, OR USED BY ANY PERSON OR ORGANIZATION, IN WHOLE OR IN PART, WITHOUT THE PRIOR WRITTEN PERMISSION OF DTS. THIS INFORMATION IS BASED ON SPECIFIC INPUT PARAMETERS AND IS FOR BUDGETARY OR PRELIMINARY USE ONLY. USE AND INTERPRETATION OF THIS INFORMATION AND DETERMINING THE APPLICABILITY TO A SPECIFIC PROJECT IS AT THE SOLE DISCRETION OF THE USER AND/OR THE ENGINEER OF RECORD.

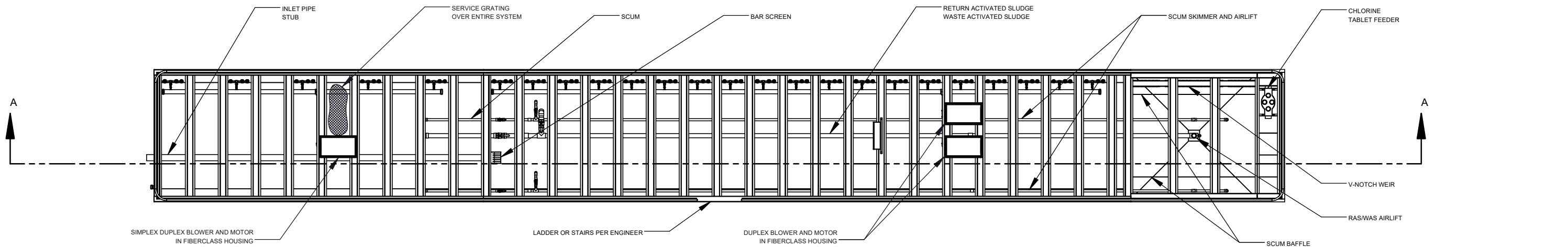
**ENVIRO-AIRE PACKAGE PLANT  
B-27.5 THROUGH B-50.0**

**GENERAL ARRANGEMENT  
DESIGN OVERVIEW**

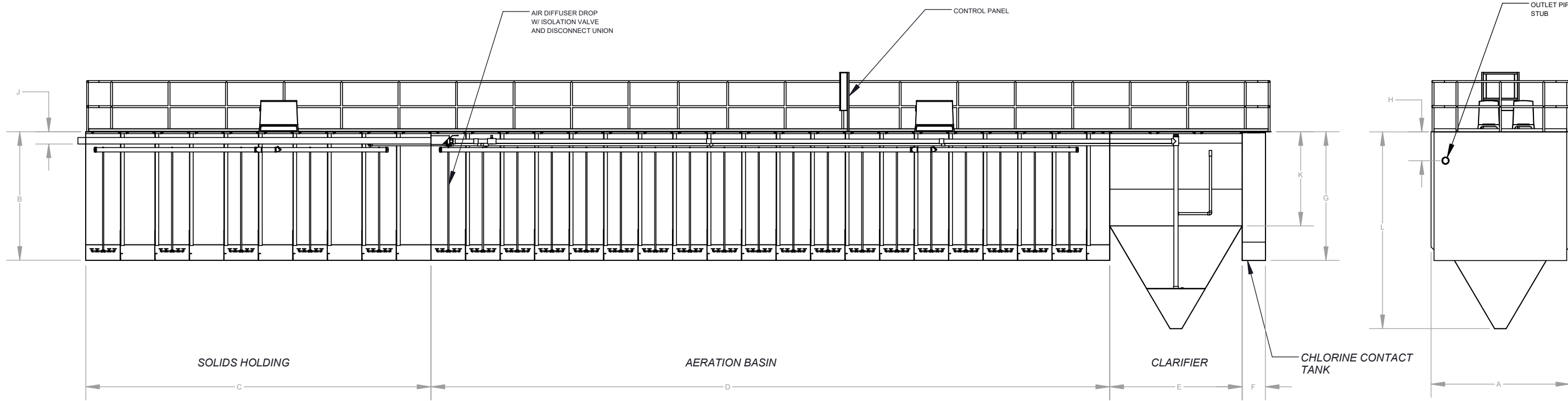
HORIZ. SCALE N/A	PROJECT NO. P/N
VERT. SCALE N/A	DATE 12/09/2021
DRAWN BY KJS	DESIGNED BY AOB
DRAWING NO. C1.0	SHEET NO. 01 OF 02

TABLE 4  
PACKAGE PLANT DIMENSIONS

MODEL	AERATION VOLUME (GAL)	CLARIFIER VOLUME (GAL)	C.C.T. VOLUME (GAL)	SOLIDS HOLDING VOLUME (GAL)	A	B	C	D	E	F	G	H	J	K	L	SWD	INLET SIZE	OUTLET SIZE
B-27.5	28,287	4,733	724	14,323	12'-0"	11'-2"	16'-6"	33'-0"	11'-6"	2'-0"	7'-0"	2'-8"	1'-1"	4'-2"	13'-1"	9'-8"	6"	6"
B-30.0	30,000	5,061	799	15,191	12'-0"	11'-2"	17'-6"	35'-0"	11'-6"	2'-0"	7'-4"	2'-8"	1'-1"	4'-6"	13'-5"	9'-8"	6"	6"
B-35.0	35,144	5,879	942	17,795	12'-0"	11'-2"	20'-6"	41'-0"	11'-6"	2'-0"	8'-2"	2'-8"	1'-1"	5'-4"	14'-3"	9'-8"	6"	6"
B-40.0	40,287	6,698	1,085	20,399	12'-0"	11'-2"	23'-6"	47'-0"	11'-6"	2'-0"	9'-2"	2'-10"	1'-1"	6'-2"	15'-1"	9'-8"	6"	6"
B-45.0	45,430	7,680	1,424	23,003	12'-0"	11'-2"	26'-6"	53'-0"	11'-6"	2'-0"	11'-2"	2'-10"	1'-1"	7'-2"	16'-1"	9'-8"	6"	6"
B-50.0	50,574	8,662	1,424	25,607	12'-0"	11'-2"	29'-6"	59'-0"	11'-6"	2'-0"	11'-2"	2'-10"	1'-1"	8'-2"	17'-1"	9'-8"	6"	6"



PLAN VIEW



ELEVATION VIEW  
SECTION A-A

NO.	DATE	INITIALS	DESCRIPTION

**INFILTRATOR WATER TECHNOLOGIES, LLC**  
 4 BUSINESS PARK RD, OLD SAYBROOK, CT 06475  
 WWW.INFILTRATORWATER.COM  
 PHONE: (800) 221-4436 / EMAIL: INFO@INFILTRATORWATER.COM

COPYRIGHT (C) 2024 INFILTRATOR WATER TECHNOLOGIES, LLC (DTS). INFORMATION CONTAINED HEREIN IS CONFIDENTIAL AND IS THE PROPERTY OF DTS. NO PART OF THIS DRAWING SHALL BE REPRODUCED, DISTRIBUTED, DISCLOSED, OR USED BY ANY PERSON OR ORGANIZATION, IN WHOLE OR IN PART, WITHOUT THE PRIOR WRITTEN PERMISSION OF DTS. THIS INFORMATION IS BASED ON SPECIFIC INPUT PARAMETERS AND IS FOR BUDGETARY OR PRELIMINARY USE ONLY. USE AND INTERPRETATION OF THIS INFORMATION AND DETERMINING THE APPLICABILITY TO A SPECIFIC PROJECT IS AT THE SOLE DISCRETION OF THE USER AND/OR THE ENGINEER OF RECORD.

**ENVIRO-AIRE PACKAGE PLANT  
B-27.5 THROUGH B-50.0**

**GENERAL ARRANGEMENT  
DIMENSIONS**

HORIZ. SCALE N/A	PROJECT NO. P/N
VERT. SCALE N/A	DATE 12/09/2021
DRAWN BY KJS	DESIGNED BY AOB
DRAWING NO. C1.1	SHEET NO. 02 OF 02