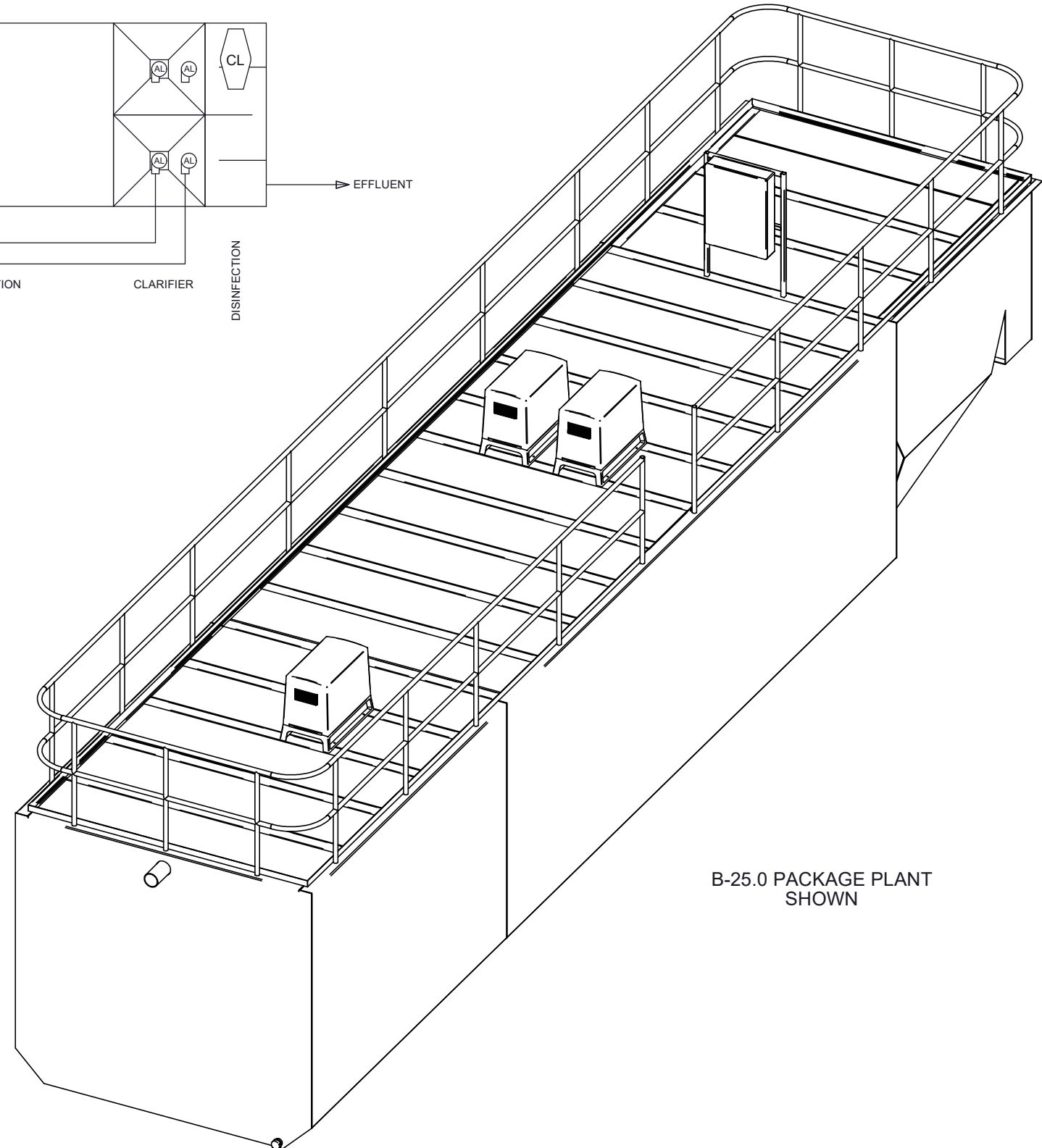
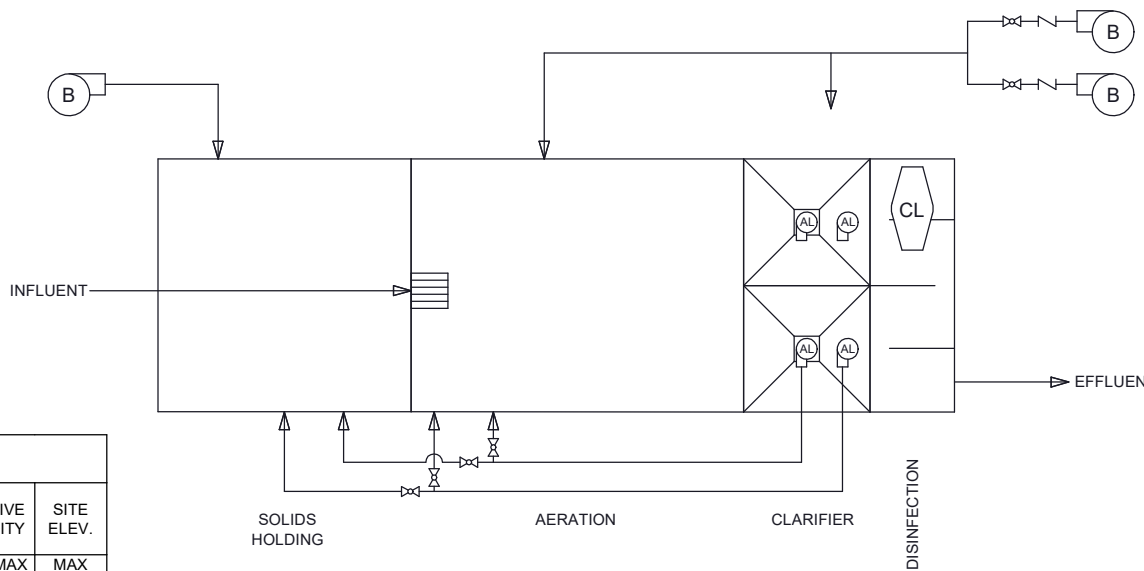


- GENERAL ARRANGEMENT NOTES
1. THESE DRAWINGS DEPICTED HEREIN REPRESENTS PRELIMINARY LAYOUT(S) OF A WASTEWATER TREATMENT SYSTEM CAPABLE OF TREATING THE DOMESTIC WASTE CONSTITUENTS NOTED IN TABLE 1.
 2. THE EQUIPMENT ARRANGEMENT/LAYOUT IS SCHEMATIC IN NATURE AND SOME OBJECTS MAY NOT BE DRAWN TO SCALE. REFER TO THE ENGINEER-OF-RECORD PROJECT DOCUMENTS FOR FINAL SITE AND/OR EQUIPMENT ARRANGEMENT.
 3. PACKAGE TREATMENT SYSTEM TANK BASINS SHALL BE FABRICATED FROM STRUCTURAL GRADE STEEL PLATE PER ASTM A36 REQUIREMENTS. STRUCTURAL SHAPES SHALL BE PER AISC PREFERRED MATERIAL SPECIFICATION.
 4. BLOWERS, WEIRS, CONTROL PANELS, AND VARIOUS SMALL PARTS SHALL BE SHIPPED UNASSEMBLED AND SECURELY PACKAGED. TO BE INSTALLED BY CONTRACTOR. REFER TO MANUFACTURER'S INSTALLATION INSTRUCTIONS FOR ADDITIONAL DETAIL.
 5. CONTRACTOR TO PROVIDE AND INSTALL ALL FIELD PIPING AND SECURE ALL EQUIPMENT CONNECTIONS AS SHOWN IN THE ENGINEER OF RECORD'S PROJECT DOCUMENTS.
 6. INTERNAL DEVICES SHALL BE INSTALLED PLUMB AND LEVEL.
 7. CONTACT AN INFILTRATOR/DELTA REPRESENTATIVE REGARDING DEVIATIONS FROM STANDARDS.



**TABLE 1
PROCESS PARAMETERS**

MODEL	AVG. DAILY FLOW		PEAK DAILY FLOW (PDF)	PEAK HOURLY FLOW (PHF)	INFLUENT BOD	AIR TEMP.	WATER TEMP.		RELATIVE HUMIDITY		SITE ELEV.
	MIN	MAX	MAX	MAX	MAX	MAX	MIN	MAX	MIN	MAX	MAX
B-15.0	7,500 (GPD)	22,500 (GPD)	30,000 (GPD)	60,000 (GPD)	25 (LB/D)	115°F	68°F	90°F	10%	90%	1,000 FT
B-16.0	8,000 (GPD)	24,000 (GPD)	32,000 (GPD)	64,000 (GPD)	26.7 (LB/D)	115°F	68°F	90°F	10%	90%	1,000 FT
B-17.0	8,500 (GPD)	25,500 (GPD)	34,000 (GPD)	68,000 (GPD)	28.4 (LB/D)	115°F	68°F	90°F	10%	90%	1,000 FT
B-18.0	9,000 (GPD)	27,000 (GPD)	36,000 (GPD)	72,000 (GPD)	30 (LB/D)	115°F	68°F	90°F	10%	90%	1,000 FT
B-19.0	9,500 (GPD)	28,500 (GPD)	38,000 (GPD)	76,000 (GPD)	31.7 (LB/D)	115°F	68°F	90°F	10%	90%	1,000 FT
B-20.0	10,000 (GPD)	30,000 (GPD)	40,000 (GPD)	80,000 (GPD)	33.4 (LB/D)	115°F	68°F	90°F	10%	90%	1,000 FT
B-22.5	11,250 (GPD)	33,750 (GPD)	45,000 (GPD)	90,000 (GPD)	37.5 (LB/D)	115°F	68°F	90°F	10%	90%	1,000 FT
B-25.0	12,500 (GPD)	37,500 (GPD)	50,000 (GPD)	100,000 (GPD)	41.7 (LB/D)	115°F	68°F	90°F	10%	90%	1,000 FT

**TABLE 2
AIR DEMAND**

PARAMETER	B-15.0	B-16.0	B-17.0	B-18.0	B-19.0	B-20.0	B-22.5	B-25.0
STANDARD AIRFLOW	129 SCFM	136 SCFM	142 SCFM	148 SCFM	154 SCFM	161 SCFM	176 SCFM	192 SCFM
SITE AIR REQ.	146 ICFM	153 ICFM	160 ICFM	167 ICFM	174 ICFM	181 ICFM	198 ICFM	216 ICFM
BLOWER INLET AIR	146 ICFM	153 ICFM	160 ICFM	167 ICFM	174 ICFM	181 ICFM	198 ICFM	216 ICFM
AIR HEADER SIZE	2"	2"	2.5"	2.5"	2.5"	2.5"	2.5"	2.5"
BLOWER SELECTION	G-D	G-D	G-D	G-D	G-D	G-D	G-D	G-D
BLOWER MODEL	3M	3M	4M	4M	4M	4M	4M	4M
NOISE LEVEL	84 dB(A)	85 dB(A)	80 dB(A)	81 dB(A)	81 dB(A)	81 dB(A)	82 dB(A)	83 dB(A)
AIR TEMP. RISE	74°F	73°F	80°F	79°F	78°F	77°F	75°F	74°F
BLOWER INLET DIAMETER	2" NPT	2" NPT	2.5" NPT	2.5" NPT	2.5" NPT	2.5" NPT	2.5" NPT	2.5" NPT
BLOWER OUTLET DIAMETER	2" NPT	2" NPT	2.5" NPT	2.5" NPT	2.5" NPT	2.5" NPT	2.5" NPT	2.5" NPT
MOTOR SELECTION	5 HP	7.5 HP	7.5 HP	7.5 HP	7.5 HP	7.5 HP	7.5 HP	7.5 HP
OPERATING POWER	3.6 kW	3.7 kW	4.1 kW	4.3 kW	4.3 kW	4.5 kW	4.8 kW	6.9 HP
STARTING CURRENT	133.5 A @ 230 V 1-PH 60HZ 92.0/46.0 A @ 230/460 V 3-PH 60HZ	198 A @ 230 1-PH 60HZ 124/62 A @ 230/460 3-PH 60HZ						
FULL LOAD CURRENT	19.5 A @ 230 V 1-PH 60HZ 14.07.0 A @ 230/460 V 3-PH 60HZ	30.0 A @ 230 V 1-PH 60HZ 19.0/9.5 A @ 230/460 V 3-PH 60HZ						

**TABLE 3
STANDARD EQUIPMENT LIST**

MODEL	MAIN AIR BLOWER			AERATION DIFFUSERS			SOLIDS MIXING BLOWER			SOLIDS MIXING DIFFUSERS			CHLORINE TABLET FEEDER			CONTROL PANEL		
	QTY.	MAKE	MODEL	QTY.	MAKE	MODEL	QTY.	MAKE	MODEL	QTY.	MAKE	MODEL	QTY.	MAKE	MODEL	QTY.	MAKE	MODEL
B-15.0	2	G-D	3M	24	DIFFUSED GAS TECHNOLOGIES	DP-75	1	G-D	2M	8	DIFFUSED GAS TECHNOLOGIES	DP-75	1	NORWECO	IT2000	1	DELTA	PER DESIGN
B-16.0	2	G-D	3M	24	DIFFUSED GAS TECHNOLOGIES	DP-75	1	G-D	2M	8	DIFFUSED GAS TECHNOLOGIES	DP-75	1	NORWECO	IT2000	1	DELTA	PER DESIGN
B-17.0	2	G-D	4M	24	DIFFUSED GAS TECHNOLOGIES	DP-75	1	G-D	2M	8	DIFFUSED GAS TECHNOLOGIES	DP-75	1	NORWECO	IT2000	1	DELTA	PER DESIGN
B-18.0	2	G-D	4M	28	DIFFUSED GAS TECHNOLOGIES	DP-75	1	G-D	2M	8	DIFFUSED GAS TECHNOLOGIES	DP-75	1	NORWECO	IT2000	1	DELTA	PER DESIGN
B-19.0	2	G-D	4M	28	DIFFUSED GAS TECHNOLOGIES	DP-75	1	G-D	2M	8	DIFFUSED GAS TECHNOLOGIES	DP-75	1	NORWECO	IT2000	1	DELTA	PER DESIGN
B-20.0	2	G-D	4M	32	DIFFUSED GAS TECHNOLOGIES	DP-75	1	G-D	2M	8	DIFFUSED GAS TECHNOLOGIES	DP-75	1	NORWECO	IT2000	1	DELTA	PER DESIGN
B-22.5	2	G-D	4M	36	DIFFUSED GAS TECHNOLOGIES	DP-75	1	G-D	2L	8	DIFFUSED GAS TECHNOLOGIES	DP-75	1	NORWECO	IT2000	1	DELTA	PER DESIGN
B-25.0	2	G-D	4M	40	DIFFUSED GAS TECHNOLOGIES	DP-75	1	G-D	2L	12	DIFFUSED GAS TECHNOLOGIES	DP-75	1	NORWECO	IT2000	1	DELTA	PER DESIGN

NO.	DATE	INITIALS	DESCRIPTION

INFILTRATOR WATER TECHNOLOGIES, LLC
 4 BUSINESS PARK RD, OLD SAYBROOK, CT 06475
 WWW.INFILTRATORWATER.COM
 PHONE: (800) 221-4436 / EMAIL: INFO@INFILTRATORWATER.COM

COPYRIGHT (C) 2024 INFILTRATOR WATER TECHNOLOGIES, LLC (DTS). INFORMATION CONTAINED HEREIN IS CONFIDENTIAL AND IS THE PROPERTY OF DTS. NO PART OF THIS DRAWING SHALL BE REPRODUCED, DISTRIBUTED, DISCLOSED, OR USED BY ANY PERSON OR ORGANIZATION, IN WHOLE OR IN PART, WITHOUT THE PRIOR WRITTEN PERMISSION OF DTS. THIS INFORMATION IS BASED ON SPECIFIC INPUT PARAMETERS AND IS FOR BUDGETARY OR PRELIMINARY USE ONLY. USE AND INTERPRETATION OF THIS INFORMATION AND DETERMINING THE APPLICABILITY TO A SPECIFIC PROJECT IS AT THE SOLE DISCRETION OF THE USER AND/OR THE ENGINEER OF RECORD.

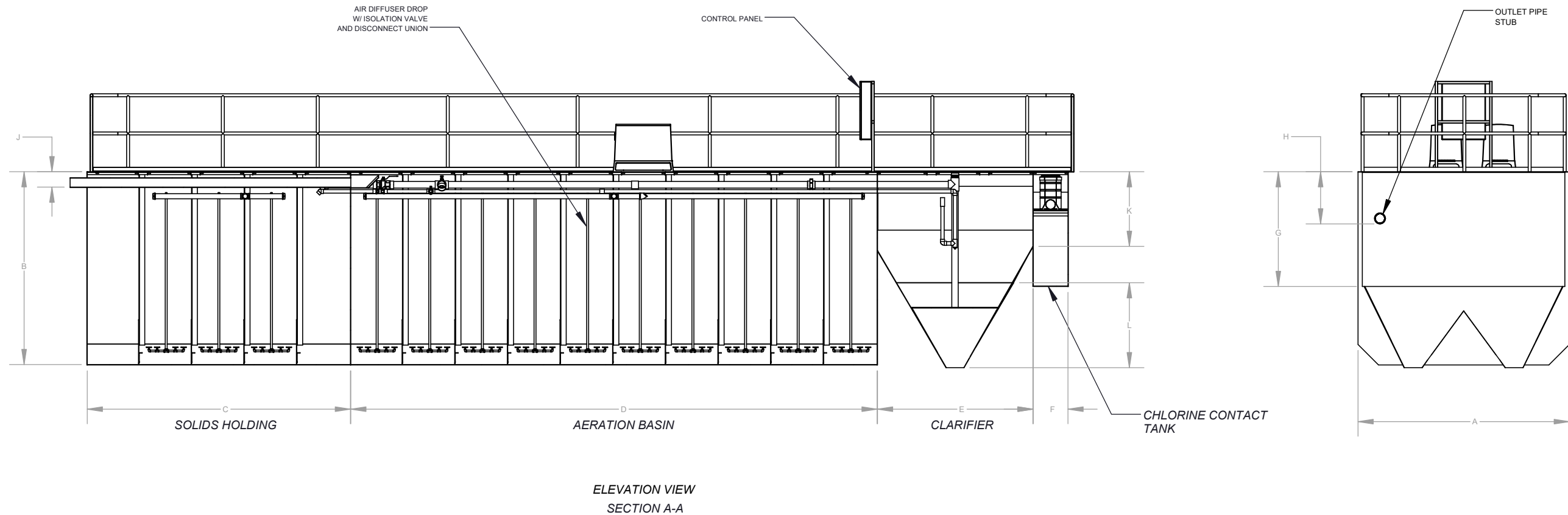
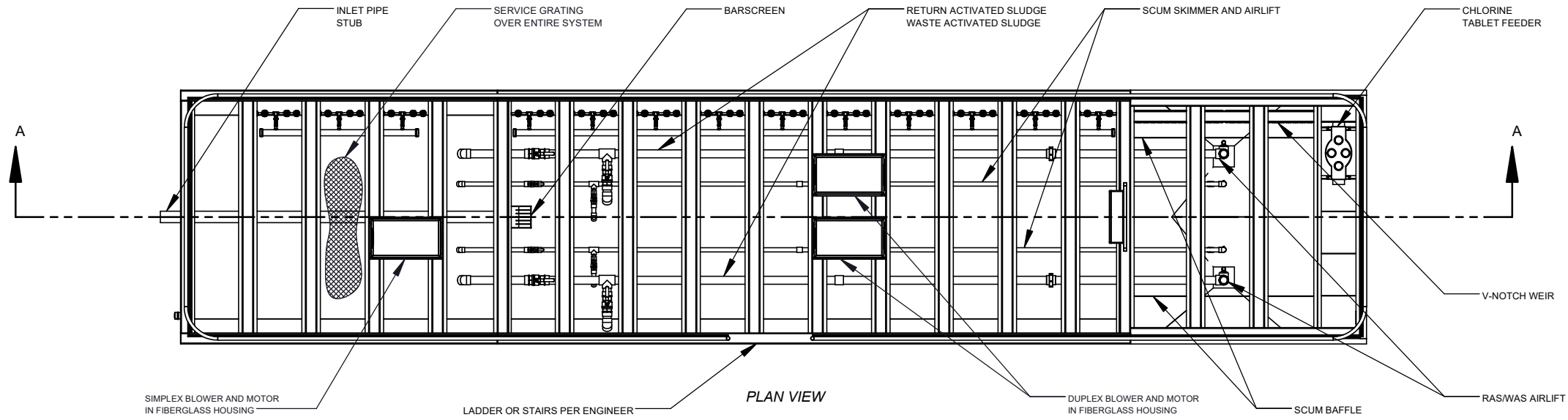
**ENVIRO-AIRE PACKAGE PLANT
B-15.0 THROUGH B-25.0**

**GENERAL ARRANGEMENT
DESIGN OVERVIEW**

HORIZ. SCALE N/A	PROJECT NO. P/N
VERT. SCALE N/A	DATE 11/01/2021
DRAWN BY KJS	DESIGNED BY AOB
DRAWING NO.	SHEET NO.
C1.0	01 OF 02

TABLE 4
PACKAGE PLANT DIMENSIONS

MODEL	AERATION VOLUME (GAL)	CLARIFIER VOLUME (GAL)	C.C.T. VOLUME (GAL)	SOLIDS HOLDING VOLUME (GAL)	A	B	C	D	E	F	G	H	J	K	L	SWD	INLET SIZE	OUTLET SIZE
B-15.0	15,429	3,242	399	7,812	12'-0"	11'-2"	9'-0"	18'-0"	5'-9"	2'-0"	5'-0"	2'-8"	1'-1"	7'-2"	4'-0"	9'-8"	6"	6"
B-16.0	16,286	3,242	428	8,246	12'-0"	11'-2"	9'-6"	19'-0"	5'-9"	2'-0"	5'-2"	2'-8"	1'-1"	7'-2"	4'-0"	9'-8"	6"	6"
B-17.0	17,143	3,242	457	8,680	12'-0"	11'-2"	10'-0"	20'-0"	5'-9"	2'-0"	5'-4"	2'-8"	1'-1"	7'-2"	4'-0"	9'-8"	6"	6"
B-18.0	18,000	3,242	485	9,114	12'-0"	11'-2"	10'-6"	21'-0"	5'-9"	2'-0"	5'-6"	2'-8"	1'-1"	7'-2"	4'-0"	9'-8"	6"	6"
B-19.0	19,715	3,242	514	9,982	12'-0"	11'-2"	11'-6"	23'-0"	5'-9"	2'-0"	5'-8"	2'-8"	1'-1"	7'-2"	4'-0"	9'-8"	6"	6"
B-20.0	20,572	4,202	657	10,416	12'-0"	11'-2"	12'-0"	24'-0"	8'-10"	2'-0"	6'-6"	2'-8"	1'-1"	4'-6"	4'-10"	9'-8"	6"	6"
B-22.5	23,144	4,202	657	11,719	12'-0"	11'-2"	13'-6"	27'-0"	8'-10"	2'-0"	6'-6"	2'-8"	1'-1"	4'-6"	4'-10"	9'-8"	6"	6"
B-25.0	25,715	4,202	657	13,021	12'-0"	11'-2"	15'-0"	30'-0"	8'-10"	2'-0"	6'-6"	2'-8"	1'-1"	4'-6"	4'-10"	9'-8"	6"	6"



NO.	DATE	INITIALS	DESCRIPTION


INFILTRATOR WATER TECHNOLOGIES, LLC
 4 BUSINESS PARK RD, OLD SAYBROOK, CT 06475
 WWW.INFILTRATORWATER.COM
 PHONE: (800) 221-4436 / EMAIL: INFO@INFILTRATORWATER.COM

COPYRIGHT (C) 2024 INFILTRATOR WATER TECHNOLOGIES, LLC (DTS). INFORMATION CONTAINED HEREIN IS CONFIDENTIAL AND IS THE PROPERTY OF DTS. NO PART OF THIS DRAWING SHALL BE REPRODUCED, DISTRIBUTED, DISCLOSED, OR USED BY ANY PERSON OR ORGANIZATION, IN WHOLE OR IN PART, WITHOUT THE PRIOR WRITTEN PERMISSION OF DTS. THIS INFORMATION IS BASED ON SPECIFIC INPUT PARAMETERS AND IS FOR BUDGETARY OR PRELIMINARY USE ONLY. USE AND INTERPRETATION OF THIS INFORMATION AND DETERMINING THE APPLICABILITY TO A SPECIFIC PROJECT IS AT THE SOLE DISCRETION OF THE USER AND/OR THE ENGINEER OF RECORD.

ENVIRO-AIRE PACKAGE PLANT
B-15.0 THROUGH B-25.0

GENERAL ARRANGEMENT
DIMENSIONS

HORIZ. SCALE N/A	PROJECT NO. P/N
VERT. SCALE N/A	DATE 11/01/2021
DRAWN BY KJS	DESIGNED BY AOB
DRAWING NO.	SHEET NO.
C1.1	02 OF 02