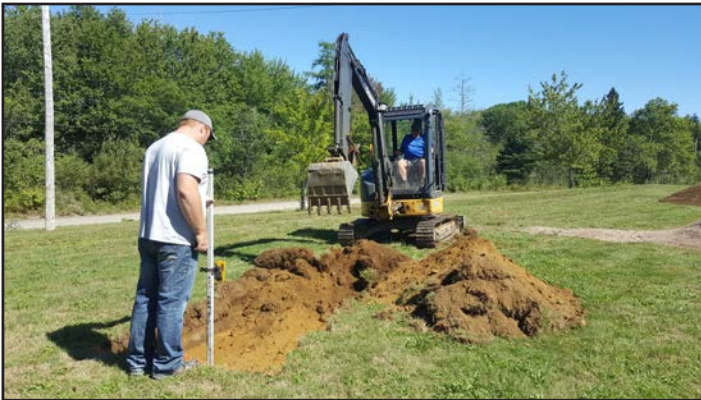


# Installation Instructions - Nova Scotia

## Filter Sand Placement

### Excavating and Preparing the Site

1. From the plans, determine the depth of the restrictive layer and the amount of ASTM C33 Filter Sand required to bring the trench bottom to its proper elevation.
2. Stake out the location of the trench or bed and set the elevations of the tank, piping, and trench bottom. Install sedimentation and erosion control barriers as necessary.
3. Excavate and level the trench or bed with the proper center-to-center separation. Remove any debris from the trench walls.
4. Rake the bottom and sides if smearing has occurred while excavating. Verify that the trench or bed is level.



### Placing the Fill Material

1. Use a dozer or backhoe to evenly spread a minimum of 3" of ASTM C33 Filter Sand. If more than 3" is required, backfill in 6- to 12- inch lift's over the required area.
2. Stabilizing each one-foot lift of fill material. This can be achieved with the back of the bucket, a hand tamper, or the flat edge of a rake.

*Note: It is critical that the added material be stabilized to match the surrounding soil's natural compaction to prevent settling or washout.*

3. Follow Steps 1 and 2 until the design elevation (trench or bed bottom) is achieved.
4. Lightly drag a landscape rake surface to scarify the top half-inch of the sand.



### Installing the Chambers

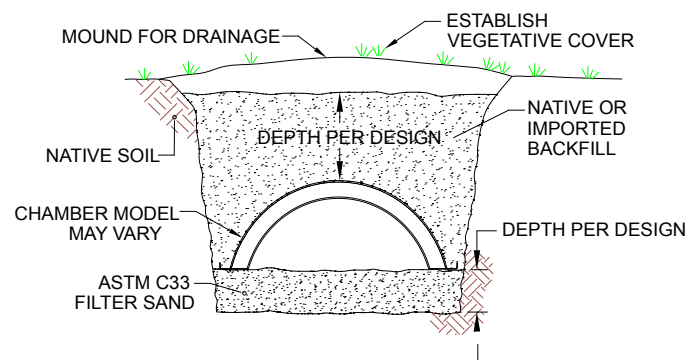
1. Place the first chamber with the open end plate at the beginning of the trench.
2. Insert the inlet pipe into the end of the chamber. The pipe will only go into the unit one inch before it reaches a stop.
3. Check the first-installed chamber to be sure that it is level.
4. If desired, secure the inlet pipe to the end plate with a screw at the 12 o'clock position.

5. Lift and place the end of the next chamber onto the previous one at a 45-degree angle. Line up the notches on the center end of the chamber and lower it to the ground to engage the interlocks.
6. Continue interlocking the chambers until the trench or bed is complete. As the chambers are installed, verify that they are nominally level.
7. To fill the sidewall area, start where one chamber interlocks with another and place backfill with the bucket. As soil is placed in, begin to "walk-in" the sidewall area.
8. Continue backfilling and "walking-in" the remainder of the sidewall area. Be sure the fill extends above the louvers a minimum of two inches. This is important to assure correct structural support.



### Covering the System

1. Backfill the trench by pushing the fill material onto the units with a small tracked bulldozer, bobcat, or box blade; maintaining a minimum of six inches of material between the chambers and the tracks.
2. Keep a minimum of 12 inches of stabilized cover over the chambers before driving wheeled vehicles across the system.
3. Leave several inches of soil above the required amount for settling and to divert runoff water from the system.
4. After the system is covered, the site should be seeded or sodded to prevent erosion.



# WARRANTY – DRAINFIELD

## INFILTRATOR WATER TECHNOLOGIES, LLC (“INFILTRATOR”) INFILTRATOR WATER TECHNOLOGIES, LLC STANDARD LIMITED DRAINFIELD WARRANTY

(a) The structural integrity of each chamber, endcap and other accessory manufactured by Infiltrator (collectively referred to as “Units”), when installed and operated in a leachfield of an onsite septic system in accordance with Infiltrator’s installation instructions, is warranted to the original purchaser (“Holder”) against defective materials and workmanship for one year from the date upon which a Septic Operation Permit is issued for the septic system containing the Units; provided, however, that if a septic permit is not required for the septic system by applicable law, the one (1) year warranty period will begin upon the date that installation of the septic system commences. In order to exercise its warranty rights, Holder must notify Infiltrator in writing at its corporate headquarters in Old Saybrook, Connecticut within fifteen (15) days of the alleged defect. Infiltrator will supply replacement Units for those Units determined by Infiltrator to be defective and covered by this Limited Warranty. Infiltrator’s liability specifically excludes the cost of removal and/or installation of the Units.

(b) THE LIMITED WARRANTY AND REMEDIES IN SUBPARAGRAPH (a) ARE EXCLUSIVE. THERE ARE NO OTHER WARRANTIES WITH RESPECT TO THE UNITS, INCLUDING NO IMPLIED WARRANTIES OF MERCHANTABILITY OR FITNESS FOR A PARTICULAR PURPOSE.

(c) This Limited Warranty shall be void if any part of the chamber system (chamber, endcap or other accessory) is manufactured by anyone other than Infiltrator. The Limited Warranty does not extend to incidental, consequential, special or indirect damages. Infiltrator shall not be liable for penalties or liquidated damages, including loss of production and profits, labor and materials, overhead costs, or other losses or expenses incurred by the Holder or any third party. Specifically excluded from

Limited Warranty coverage are damage to the Units due to ordinary wear and tear, alteration, accident, misuse, abuse or neglect of the Units; the Units being subjected to vehicle traffic or other conditions which are not permitted by the installation instructions; failure to maintain the minimum ground covers set forth in the installation instructions; the placement of improper materials into the system containing the Units; failure of the Units or the septic system due to improper siting or improper sizing, excessive water usage, improper grease disposal, or improper operation; or any other event not caused by Infiltrator. This Limited Warranty shall be void if the Holder fails to comply with all of the terms set forth in this Limited Warranty.

Further, in no event shall Infiltrator be responsible for any loss or damage to the Holder, the Units, or any third party resulting from installation or shipment, or from any product liability claims of Holder or any third party. For this Limited Warranty to apply, the Units must be installed in accordance with all site conditions required by state and local codes; all other applicable laws; and Infiltrator’s installation instructions.

(d) No representative of Infiltrator has the authority to change this Limited Warranty in any manner whatsoever, or to extend this Limited Warranty. No warranty applies to any party other than the original Holder.

The above represents the standard Limited Warranty offered by Infiltrator. A limited number of states and counties have different warranty requirements. Any purchaser of Units should contact Infiltrator’s corporate headquarters in Old Saybrook, Connecticut, prior to such purchase, to obtain a copy of the applicable warranty, and should carefully read that warranty prior to the purchase of Units.



**INFILTRATOR**<sup>®</sup>  
water technologies

4 Business Park Road  
P.O. Box 768  
Old Saybrook, CT 06475  
860-577-7000 • Fax 860-577-7001  
**1-800-221-4436**  
[www.infiltratorwater.com](http://www.infiltratorwater.com)

U.S. Patents: 4,759,661; 5,017,041; 5,156,488; 5,336,017; 5,401,116; 5,401,459; 5,511,903; 5,716,163; 5,588,778; 5,839,844 Canadian Patents: 1,329,959; 2,004,564 Other patents pending. Infiltrator, Equalizer, Quick4, and SideWinder are registered trademarks of Infiltrator Water Technologies. Infiltrator is a registered trademark in France. Infiltrator Water Technologies is a registered trademark in Mexico. Contour, MicroLeaching, PolyTuff, ChamberSpacer, MultiPort, PosiLock, QuickCut, QuickPlay, SnapLock and StraightLock are trademarks of Infiltrator Water Technologies. PolyLok is a trademark of PolyLok, Inc. TUF-TITE is a registered trademark of TUF-TITE, INC. Ultra-Rib is a trademark of IPEX Inc.

© 2017 Infiltrator Water Technologies, LLC. All rights reserved. Printed in U.S.A.

C96A 0417ISI

**Contact Infiltrator Water Technologies’ Technical Services Department for assistance at 1-800-221-4436**